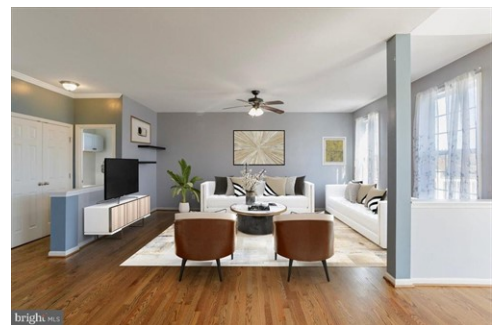




\$ 470,000



182 Bouldin Rd, Charles Town, WV 25414

- » Beds: 4 | Baths: 2 Full, 1 Half
- » MLS #: WVJF2016470
- » Single Family | 2,596 ft² | Lot: 11,552 ft²
- » More Info: 182BouldinRd.IsForSale.com



Jennifer & Kerry Whitehead
Mannen Sosa
(304) 671-4599 (Kerry)
(304) 886-3248 (Jennifer)
(240) 461-2126 (Mannen)
jenniferwhitehead@premiermove.com
<http://www.teamwhitehead.com>

Coldwell Banker Premier
115 Aikens Center
Suite 21
Martinsburg, WV 25404
(304) 886-3248

Welcome to your dream home! This stunning Colonial-style residence, built in 2013, offers a perfect blend of modern comfort and timeless elegance. Nestled on a generous 0.27-acre corner lot, this property has easy access to community paved walking path, and mountain views that will captivate you every day. Step inside to discover a spacious 2, 596 sq. ft. layout featuring four inviting bedrooms and two and a half bathrooms. Elegant touches like crown moldings, chair railings, and recessed lighting enhance the interior, while gleaming hardwood flooring creates a warm and inviting atmosphere. The kitchen is equipped with modern appliances, including a electric range, dishwasher, and refrigerator, and stunning quartz counter tops ensuring culinary adventures are a delight. The home has been remodeled with a fabulous butler pantry, you will appreciate the sleek style and ample prep and additional storage this space offers. A low maintenance large deck off the sunroom is perfect for entertaining with stairs to your fenced back yard. Additional features include an unfinished basement with walkout stairs, perfect for customization, and a security system for peace of mind. The attached two-car garage offers convenience and ample parking. Located in a desirable area, this home combines comfort, style, and a picturesque setting. Don't miss the opportunity to make this exceptional property your own, schedule a viewing today.

